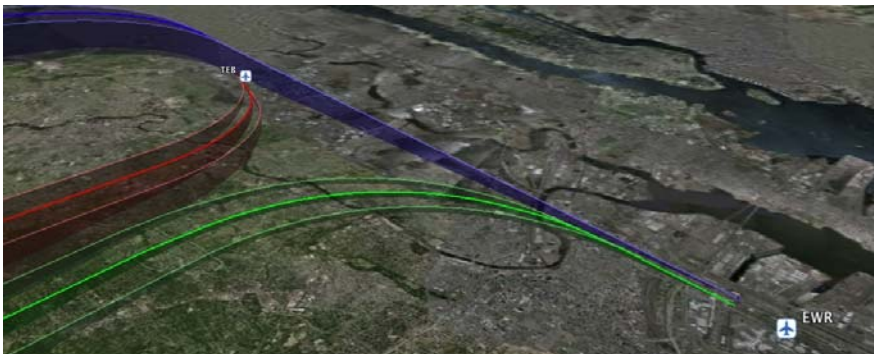
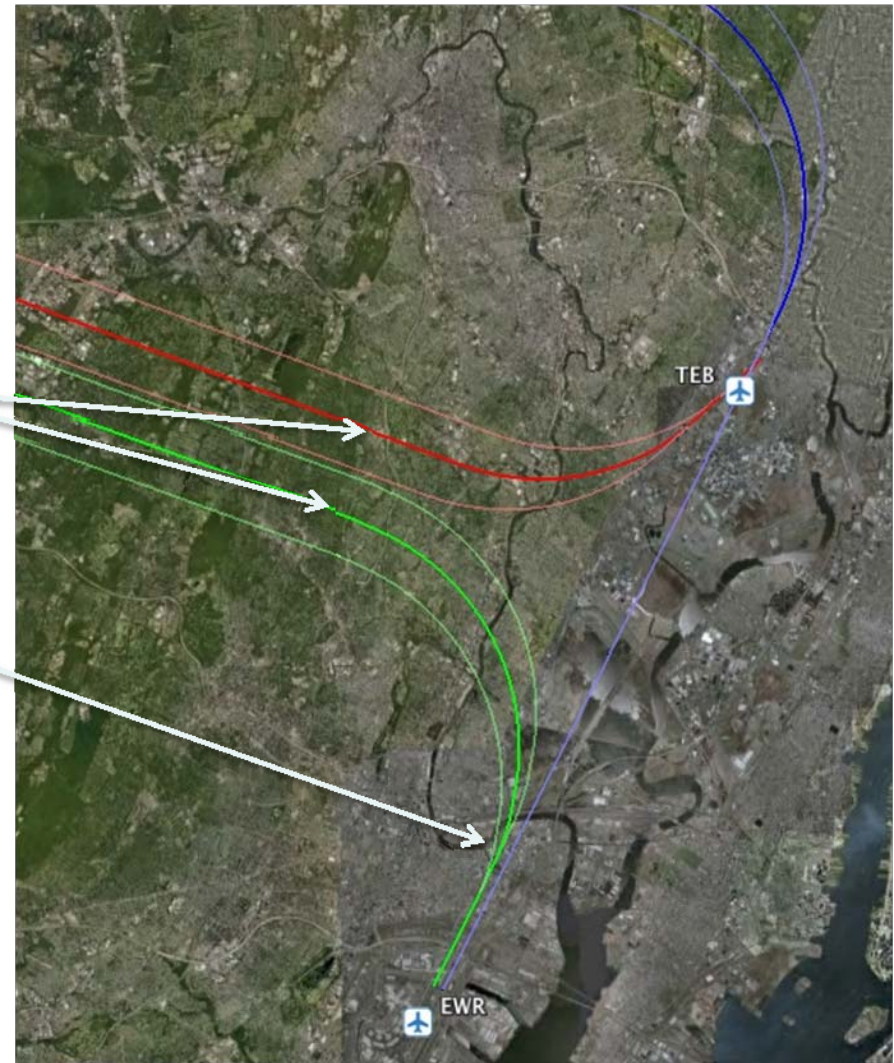


Alternate Interaction Geometry

- An alternative solution would be to place TEB 24 departures between the two EWR 22 arrival streams
- This allows the investigation of parallel opposite direction arrival-departure interactions
- This design may not provide enough time to perform the merge procedure



Arrival-Arrival Interaction

- Precision navigation may permit unusual interaction geometries in NextGen, such as:
 - Simultaneously maneuvering arrivals
 - Parallel opposite direction arrival flows
- Test the wake vortex hazard for different lengths of final approach into LGA

