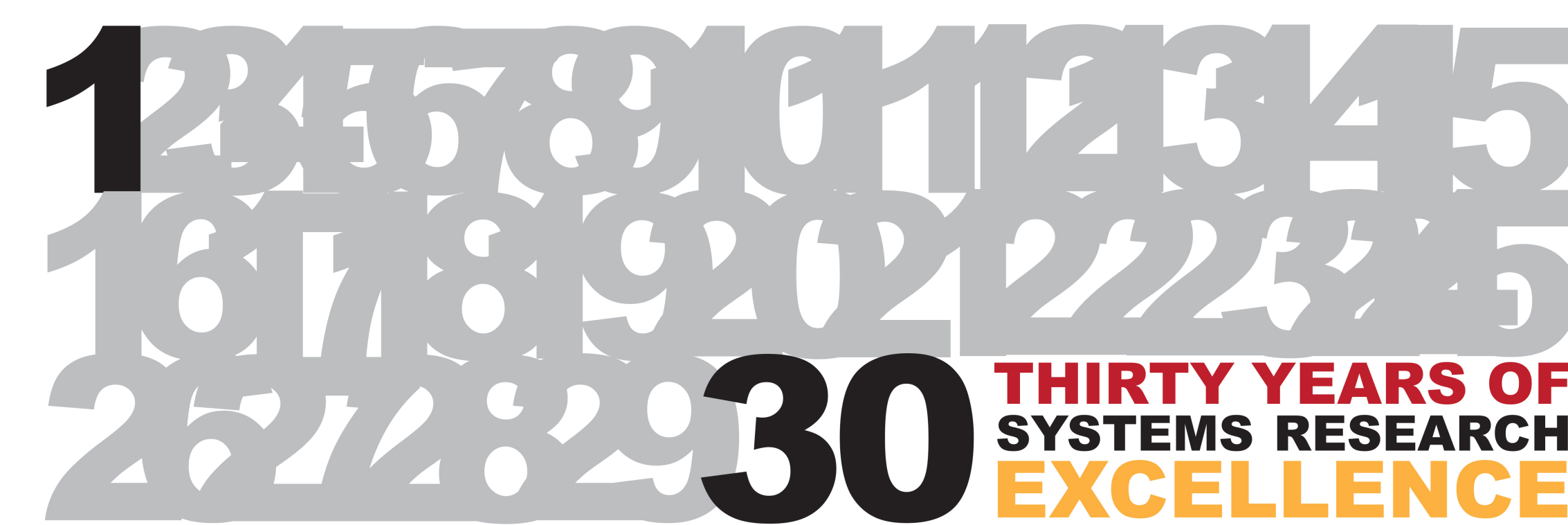
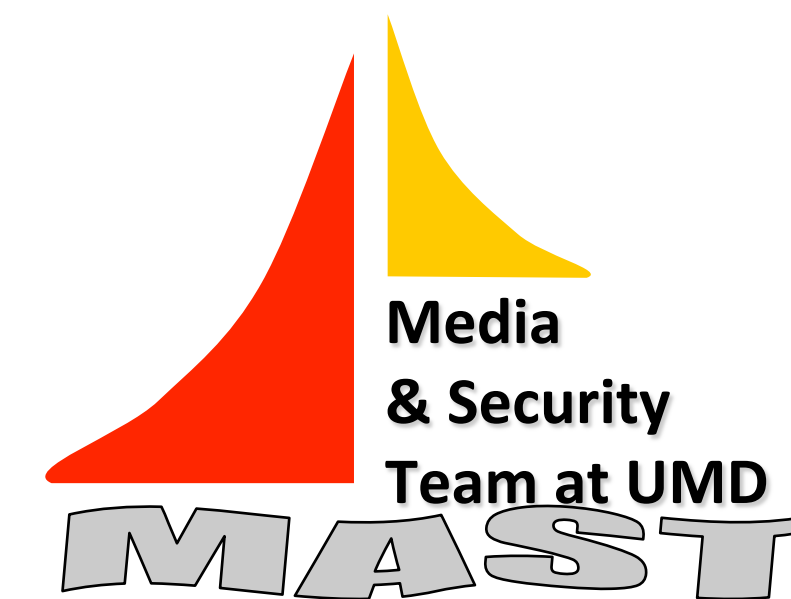


Power Signature for Information Forensics

Adi Hajj-Ahmad, Ravi Garg, Hui Su,
Avinash Varna, and Min Wu

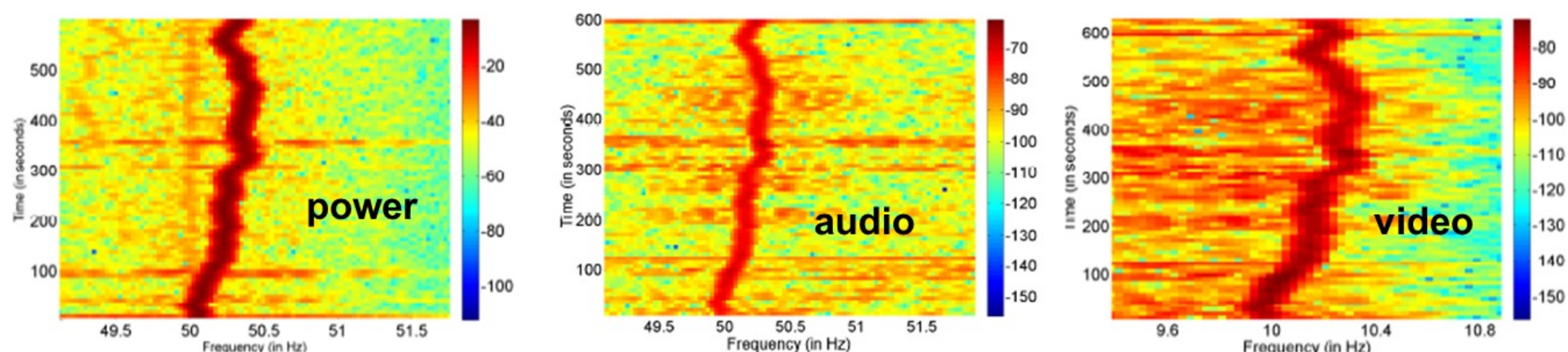


What is ENF?

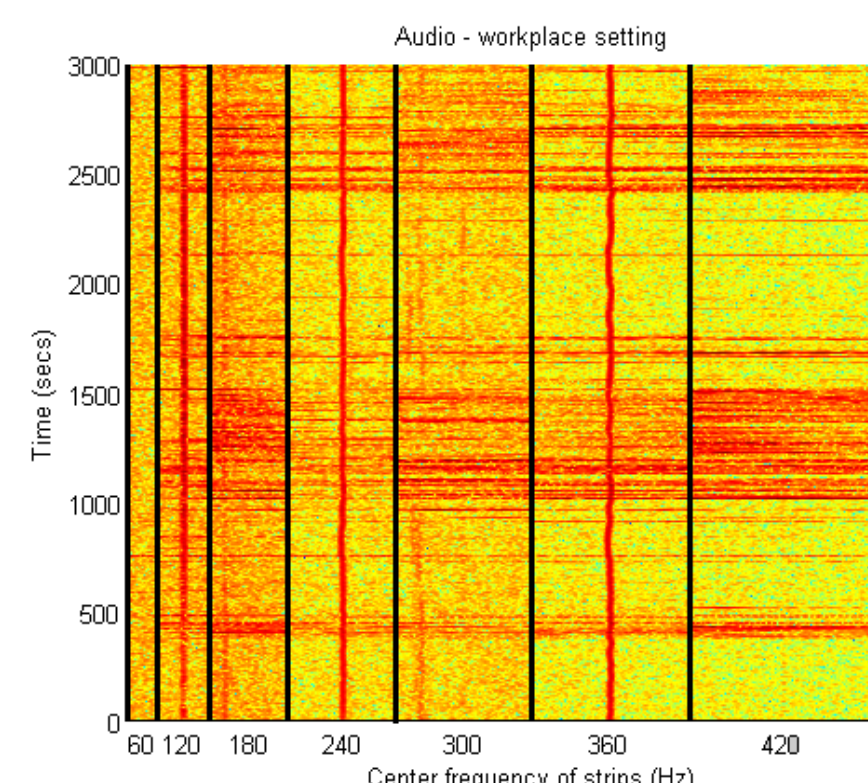
- **Electric Network Frequency** – nominally 60Hz in North America and 50Hz mostly elsewhere.
- ENF can be captured by audio/video recordings, due to electromagnetic influences.
- ENF fluctuates around nominal value due to load changes in the grid.
- Changing instantaneous ENF values over time form the **ENF signal**.

ENF Detection and Extraction

Spectrograms showing matching ENF variations in simultaneously recorded signals



- Light intensity follows a power law with electric current => ENF in video appears at 100/120Hz.
- Aliasing can occur due to lower camera sampling rates: e.g. 29.97fps aliases 100Hz signal to 10.09Hz.
- Can exploit aliasing analysis and CMOS rolling shutter to improve ENF extraction from videos.
- ENF can appear at different harmonics of nominal frequency.
- Strategically combine different spectrum strips for more accurate and robust ENF estimates.

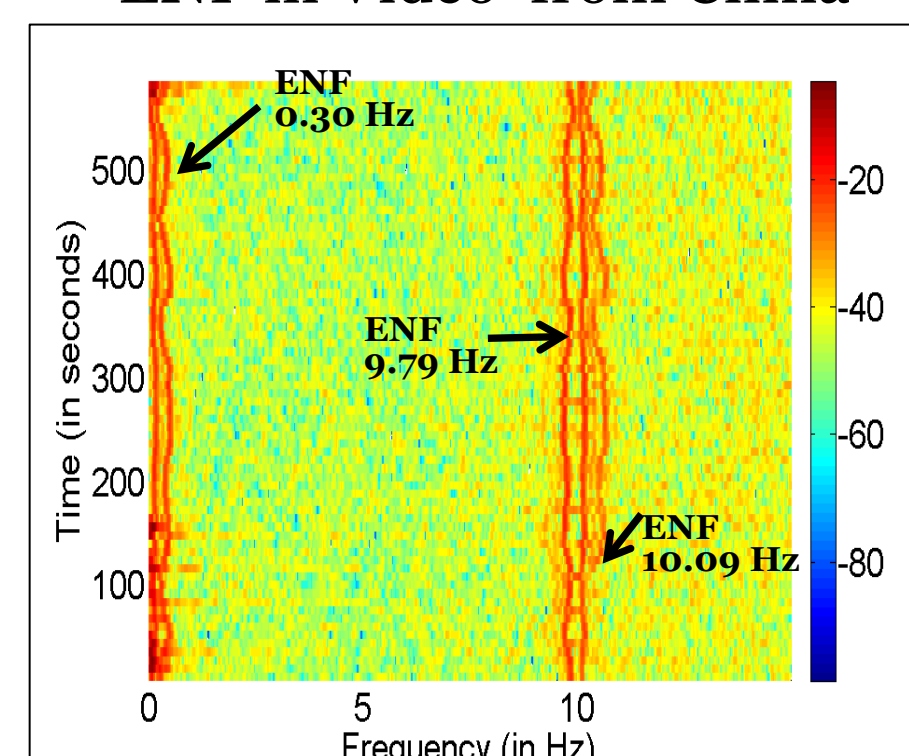


Estimate Time and Location

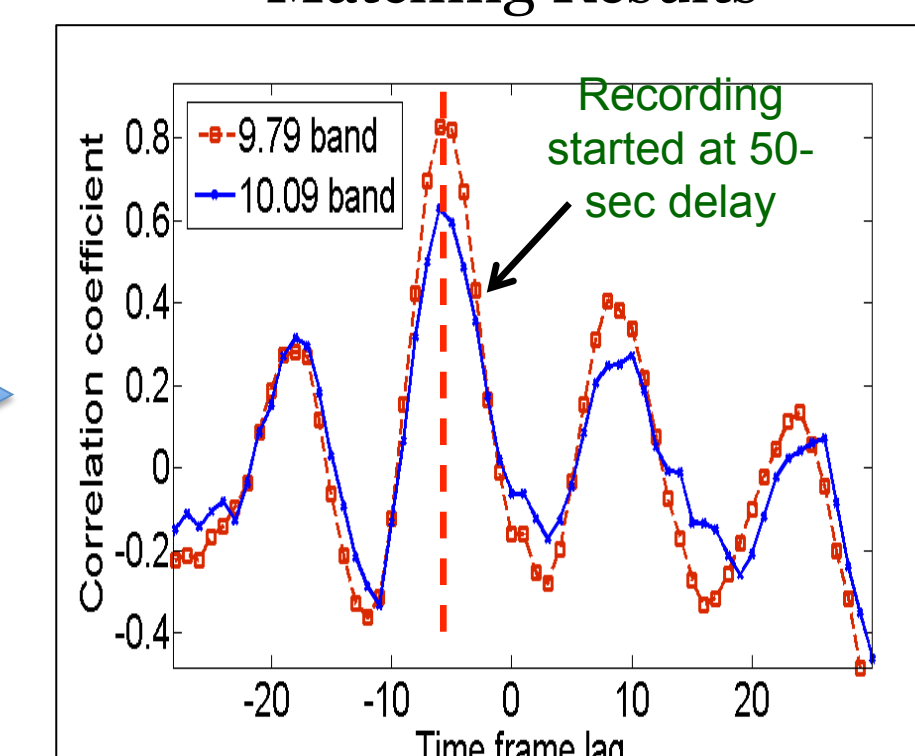
Time-of-recording estimation

- Compare ENF fluctuations from reference power-ENF with media-ENF.
- Highest correlation between two sets of ENFs corresponds to recording time.

ENF in Video from China

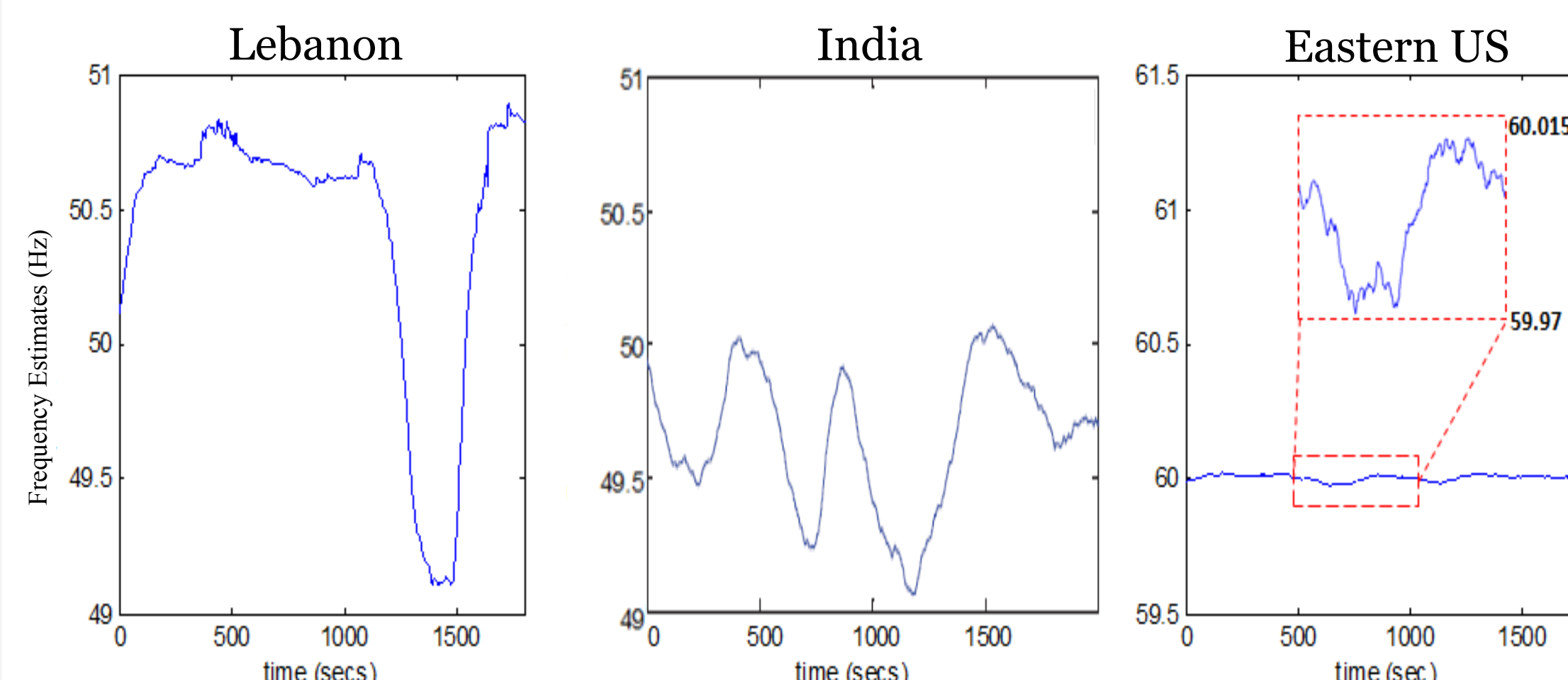
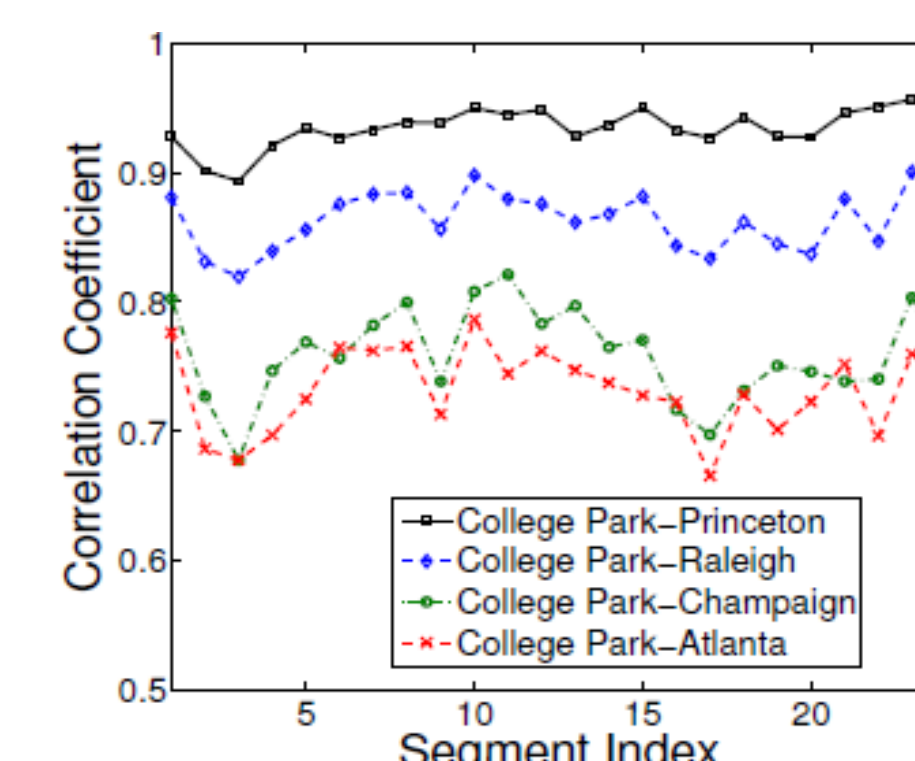


Matching Results



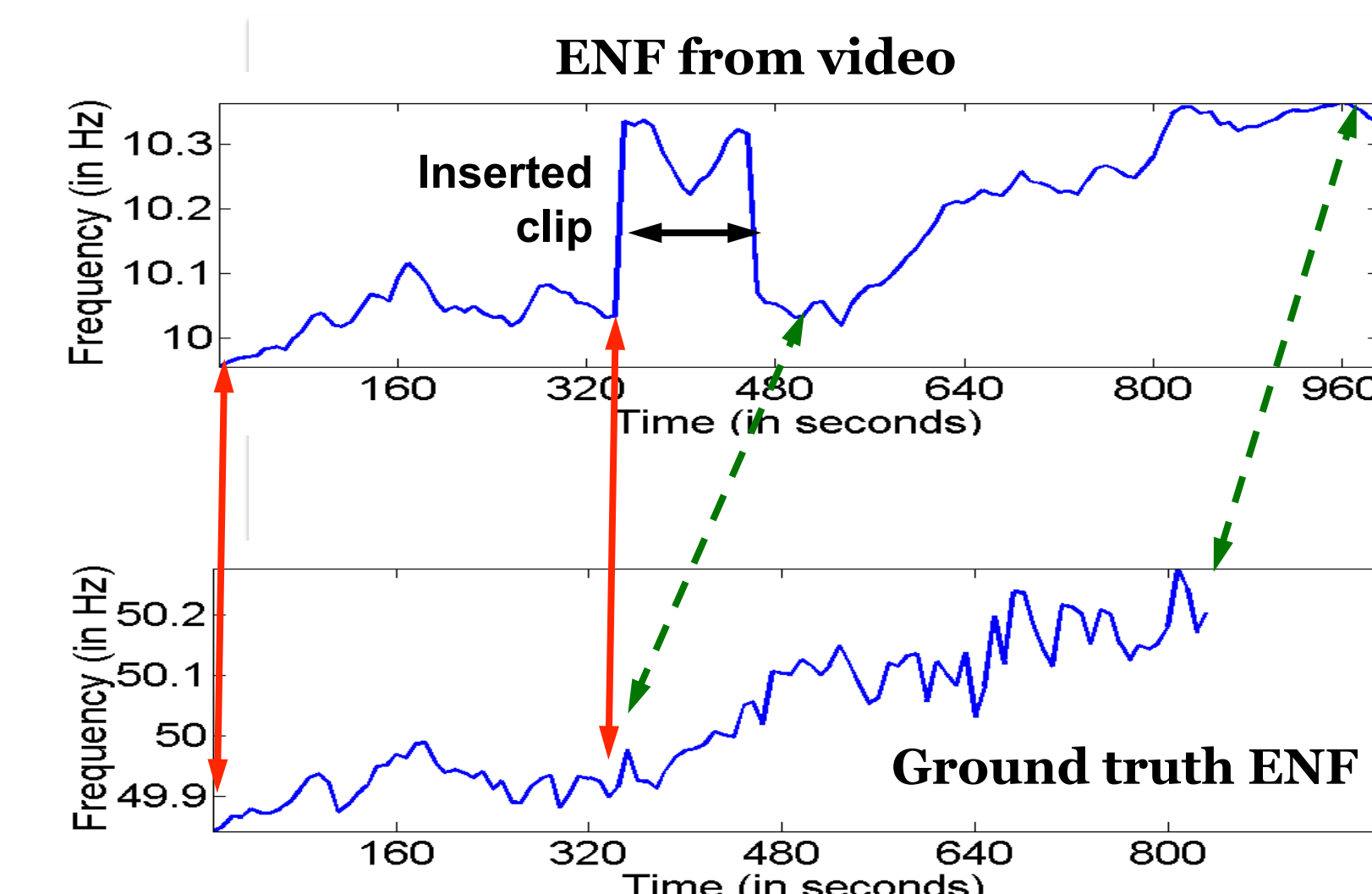
Localization

- Main ENF fluctuations are similar across a grid.
- High-pass details of ENF can help locate the origin of a signal within a grid.
- ENF from different grids can exhibit different statistical properties.
 - Can infer grid-of-origin through machine learning, with no concurrent reference ENF.



Verify Integrity

- **Insertion/Deletion of media clips** leads to discontinuity in ENF from media.
 - Compare with reference power ENF to obtain further forensic details.



- **Forensic binding:** Is the audio track in the video original or superimposed later?
 - ENF from audio track and from video track should match each other.
 - Reference power-ENF not necessary.
- **Anti-Forensics study:**
 - Possible to remove narrow-band ENF, but much harder to tamper a valid ENF without leaving other traces.
- Can extend to nighttime outdoor scenes:

Video Screenshot

